

# SARS-CoV-2 Variants of Concern Circulating in Imperial County



## What is a Variant?

Viruses constantly change through mutation that create new strains of the virus called variants. Sometimes new variants emerge and disappear. Other times, new variants persist. Multiple variants of the virus that causes COVID-19 have been documented in the United States and globally during this pandemic.

VARIANTS OF CONCERN		
WHO* Label	Lineage	Cases
Alpha	B.1.1.7	90
Beta	B.1.351	1
Delta	B.1.617.2	209
Gamma	P.1	147
<b>Total</b>		<b>447</b>

\*World Health Organization (WHO)

## SARS-CoV-2 Variant Classifications

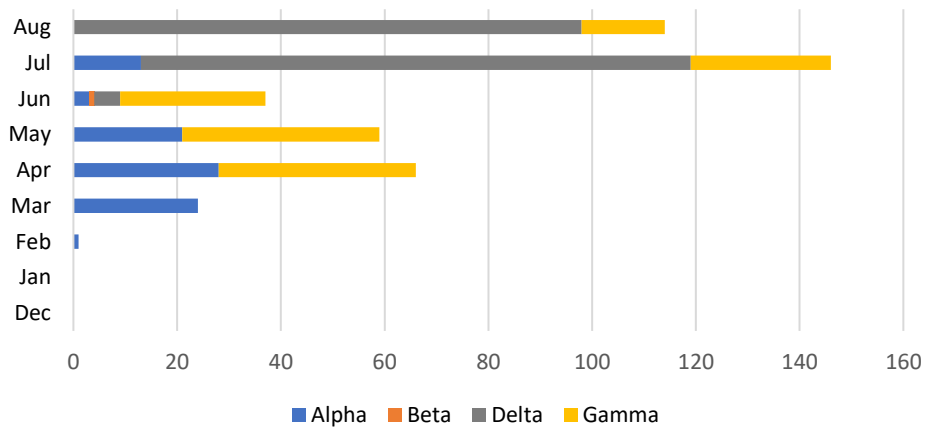
**Variants of Concern** are variants that seem to spread more easily and quickly than other variants, which may lead to more cases of COVID-19. The Alpha (B.1.1.7), Beta (B.1.351), Delta (B.1.617.2), and P.1 (Gamma) variants circulating in the United States are classified as **Variants of Concern**. An increase in the number of cases could put more strain on health-care resources, and lead to more hospitalizations and potentially more deaths.

From December 2020 to August 2021, a total of 447 SARS-CoV-2 Variants of Concern have been identified. The predominant variants circulating are Delta (B.1.617.2) and Gamma (P.1). The age group most affected is 18-49 years.

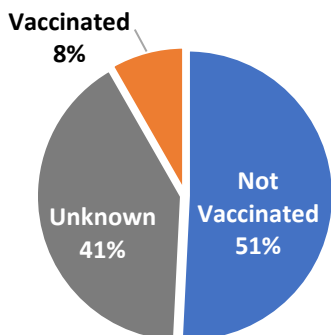
Variants of Concern by Age Range	
0-17	113
18-49	271
50-64	47
65+	16
<b>Total</b>	<b>447</b>

Variants of Concern by City	
BRAWLEY	46
CALEXICO	26
CALIPATRIA	5
EL CENTRO	72
HEBER	6
HOLTVILLE	9
IMPERIAL	68
SEELEY	3
THERMAL	4
WESTMORLAND	1
OUT OF COUNTRY	9
OUT OF COUNTRY	198
<b>Total</b>	<b>447</b>

Variants of Concern - Imperial County  
December 2020 - August 2021



## Vaccination Status of Cases with Variants of Concern



Most infections from variants of concern have been in unvaccinated individuals. Of those who are unvaccinated, 21% are children under 12 years of age. Of those with unknown vaccination status, 80% are asylum seekers.

# SARS-CoV-2 Variants of Interest Circulating in Imperial County

Updated  
September 13, 2021

VARIANTS OF INTEREST		
WHO Label	Lineage	Cases
Epsilon	B.1.427	26
	B.1.429	26
Iota	B.1.526	11
<b>Total</b>		<b>63</b>

\*World Health Organization (WHO)

## SARS-CoV-2 Variant Classifications

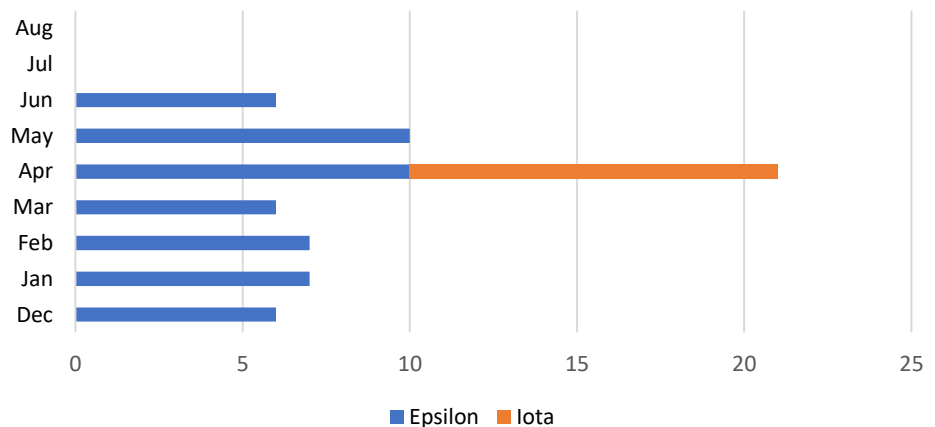
A **Variant of Interest** might require one or more appropriate public health actions, including enhanced sequence surveillance, enhanced laboratory characterization, or epidemiological investigations to assess how easily the virus spreads to others, the severity of disease, the efficacy of therapeutics and whether currently authorized vaccines offer protection. The Epsilon (B.1.427 and B.1.429) and Iota (B.1.526) variants identified in the Imperial Valley are classified as Variants of Interest.

From December 2020 to August 2021, a total of 63 SARS-CoV-2 Variants of Interest have been identified. The predominant Variant of Interest is Epsilon (B.1.427 and B.1.429). The most affected age group is 18-49 years old.

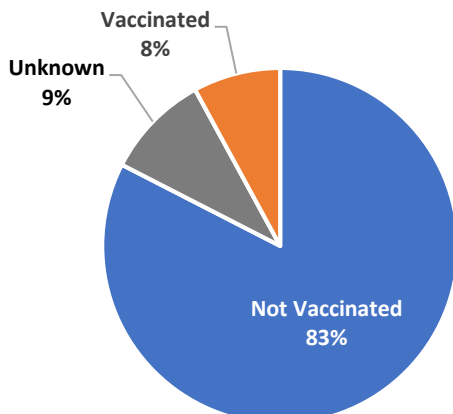
Variants of Interest by Age Range	
0-17	9
18-49	37
50-64	14
65+	3
<b>Total</b>	<b>63</b>

Variants of Interest by City	
BRAWLEY	15
CALEXICO	9
EL CENTRO	24
HEBER	1
HOLTVILLE	2
IMPERIAL	8
WESTMORLAND	1
OUT OF COUNTRY	2
OUT OF COUNTRY	1
<b>Total</b>	<b>63</b>

## Variants of Interest - Imperial County December 2020 - July 2021



## Vaccination Status of Cases with Variants of Interest



Most variant of interest infections are in unvaccinated individuals. Cities and communities with larger populations have the most variants detected.

For more information about variants in California, go to: [Tracking Variants \(ca.gov\)](https://www.cdph.ca.gov/Programs/CID/DCDC/Pages/Tracking-Variants.aspx)